

# dreamscape

LIGHTING MFG., INC.



Project: \_\_\_\_\_ Type: \_\_\_\_\_ Product Catalog Submittal:

## Moonshadow

### Fixture Description:

A solid brass sand casting with glass sealed aperture and solid brass lamp holder for wet locations. Applications include step lighting, path lighting or grazing illumination techniques.

### Construction:

A solid brass sand-casting with a linear glass sealed aperture. Eyelid shield for glare control.

### Electrical:

Remote 12-volt power supply.

### Mounting:

#### Housing:

DL-201 Zinc plated steel housing.  
DL-201B Solid Brass housing 1/2" raised finish flange.  
DL-208 Brass Remodel housing for core drill.  
Solid brass 8/32 Phillips Screws mount faceplate to housing.

#### Transitional Inner Cup:

DL-901-A Raised 1/2" finish flange for application requiring an exposed edge for finish material.  
DL-901-B No finish flange for flat finished surface.

#### Lamp:

DLED-303-Spot MR-16 7 Watt AC/DC LED, 2700K and 3000K.

#### Lens:

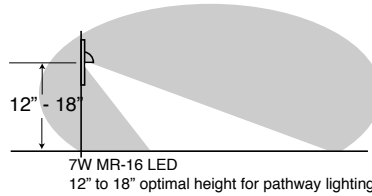
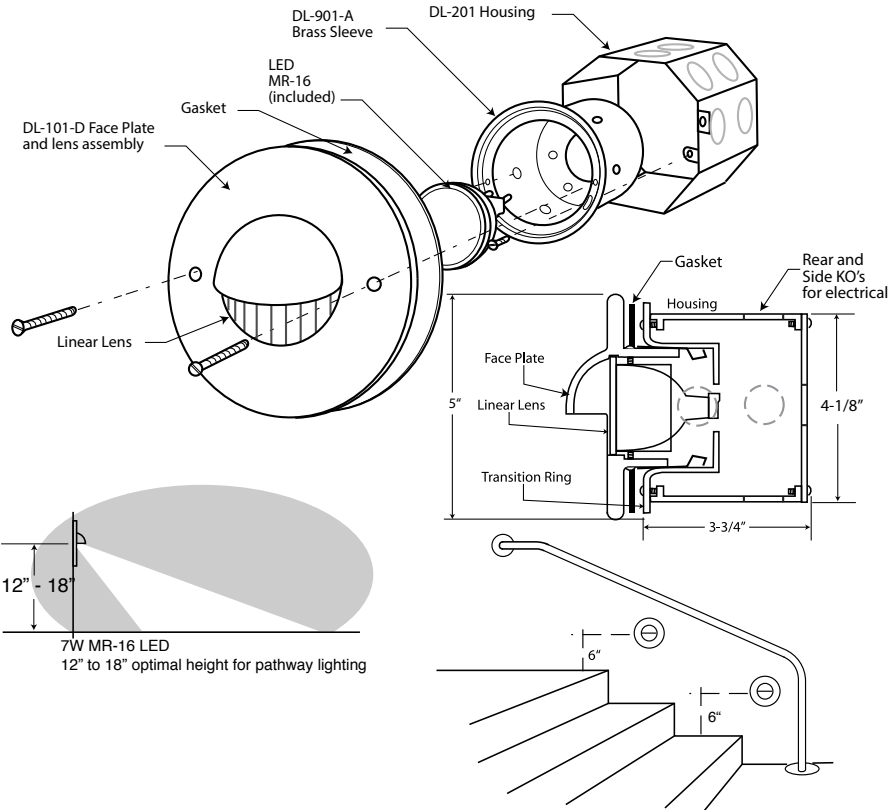
.125 glass with linear prism.

#### Label:

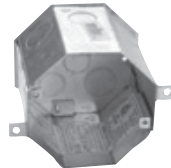
ETL listed, wet location masonry and interior wood construction.

#### Finishes:

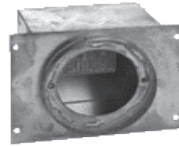
1. Verde Metal Etch 2. Satin Nickel (Plated Finish) 3. Copper Bronze Metal Etch 4. White Powder Coat 5. Ancient Bronze Metal Etch 6. Brass Bronze Metal Etch 7. Custom Color Finish 8. Copper Plate (Plated Finish) 9. Ancient Verde Metal Etch 10. Grey Bronze Metal Etch 11. Rust Brown Powder Coat 12. Black Powder Coat 13. Pewter (Plated Finish) 14. Oil Rubbed Bronze 15. Copper Edge Bronze Powder Coat 16. Black Iron Textured Matte Powder Coat 17. Copper Bronze Powder Coat 18. Marine Bronze Powder Coat (Oil Rubbed Bronze Alternative) 19. Polished Brass



### Housings



Zinc plated steel housing.  
DL-201  
4-1/8"W x 3-3/4"D



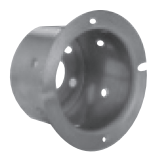
Solid brass housing  
1/2" raised finish flange.  
DL-201B  
6-9/16"W x 5"H x 3-3/4"D



Brass remodel housing for core drill.  
DL-208  
4-1/8"W x 3-5/8"D



Transition inner cup with 1/2" flange.  
DL-901-A  
4-1/4"W x 2-3/4"D



Transition inner cup with no flange.  
DL-901-B  
4-1/4"W x 2-1/4"D

### Ordering Information

Model	Housing	Inner Cup	Finishes
DLED-101-D	DL-201 Zinc Plated Housing DL-201B Solid Brass Housing with 1/2" Raised Flange DL-208 Brass Remodel Housing for Core Drill	901A-1/2" Flange for Exposed Edge 901B-No Flange for Smooth Surface Finish	1 through 17 listed above.



DLED-101D\_071522