

Recessed Damp Location Trimless Dimmable Linear Fixture with Screwless Decorative U-Shaped White Acrylic Diffuser and Integral Electronic Driver for Vertical L Intersecting Plane Applications - 90+CRI

PROJECT	TYPE	CATALOG NUMBER
---------	------	----------------

Fixture Description:

Recessed damp location trimless dimmable linear LED fixture with screwless decorative white acrylic diffuser.

Features:

- Diffuser:** High Transmission U-shaped white acrylic snap fit lens.
- Lamping:** 50,000 hour 3.9W x 2 (7.8W) LED light source.
- Electrical:** All drivers are constant voltage. 24V DC.
- Dimming:** Select from the following options.
LUTRON L3DA-ECO Hi-Lume 1% Eco-System or 1% 3-Wire LUTRON LTEA2 Hi-Lume 1% 2-Wire Driver/Dimmer LTF 2-Wire Driver/Dimmer - **ELV** Reverse Phase w/Neutral LTF 0-10 Driver/Dimmer 120 or 277
NOTE: Every 4' of length will require 1 driver. Example: 96" length includes 2 drivers.

5. Adjustable L-Bracket: Allows for 3/8" - 1" variable recessed depth alignment.

NOTE: For any other thickness contact factory for a custom bracket.

6. Housing: Fixture wall is .0625 extruded aluminum.

7. White powder coated wiring cover.

8. Fixture has one 1/2" knockout on each end.

Housing Dimensions: 3.50"W x 3"D

Length: See Chart

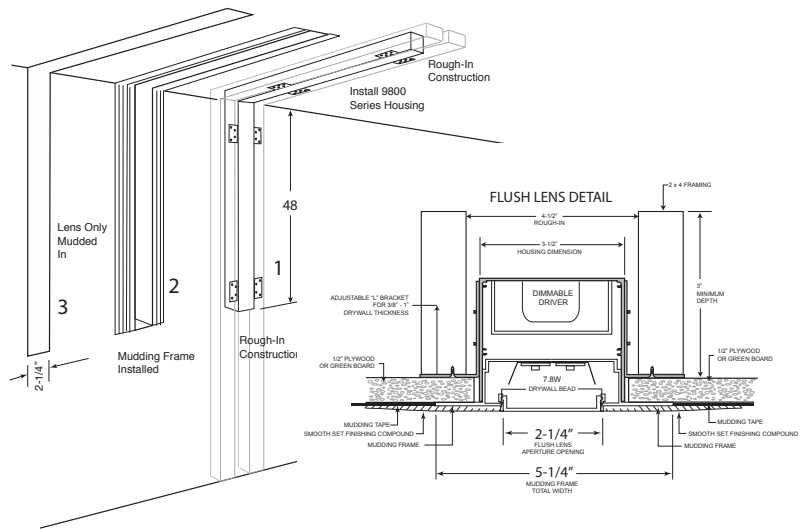
Patent: Design Patent No. 473,670S

US Patent No. US 6,616,309 B2

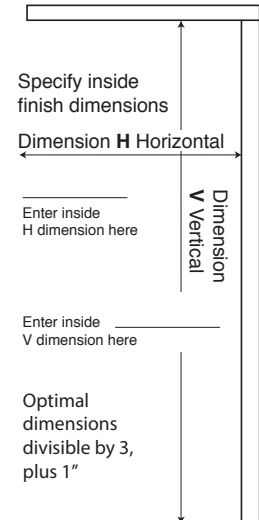
NOTE: This fixture is NON-IC. If fixture is installed in an insulated space, insulation must be held back 3" from contact with fixture. Please check your local electrical and building codes.

LED Wattage per Foot	Lumens per Foot	Color Temp.	GRI
7.8W	712	3K-90	97
7.8W	700	27K-90	90+
7.8W	712	35K-90	90+

Fixture Wattage per Foot	Lumens per Foot	Color Temp.	CRI
9.4W	390	3K-90	97
9.4W	382	27K-90	90+
9.4W	390	35K-90	90+



Typical Vertical L Intersecting Plane Fixture Layout



NOTE: PRIMARY SURGE PROTECTION SHOULD BE PROVIDED FOR MAXIMUM LIFE EXPECTANCY OF ELECTRONIC COMPONENTS



To Form a Catalog Number:	Prefix	Series	Intersecting Plane	Vertical Length	Horizontal Length	Flush Lens	Color Temp.	Wattage	Driver	Voltage
	DLED	9800-VL	IP	V _____	H _____	FL	3K90	7.8	LTF	120
Which Specifies:	DLED	9800-VL	IP	V _____	H _____	FL	3K-90	7.8	L3DA-ECO LUTRON Hi-Lume™ 1% EcoSystem	120/277
				OPTIMAL DIMENSIONS: 25", 37", 49", 61" 73", 85", 97"	OPTIMAL DIMENSIONS: 25", 37", 49", 61" 73", 85", 97"		27K-90		LTEA2W LUTRON Hi-Lume™ 1% 2 Wire	120
				TO SPECIFY AN OPTIMAL DIMENSION, USE A NUMBER DIVISIBLE BY 3 AND ADD 1". NOTE: ANY DIMENSION MAY BE FABRICATED, BUT LIGHT UNIFORMITY MAY BE IMPACTED	TO SPECIFY AN OPTIMAL DIMENSION, USE A NUMBER DIVISIBLE BY 3 AND ADD 1". NOTE: ANY DIMENSION MAY BE FABRICATED, BUT LIGHT UNIFORMITY MAY BE IMPACTED		35K-90		LTF 2-Wire	120
SEE DLED-9800-FL-3.9 SPEC SHEET FOR DRIVERS AND OTHER INFORMATION									LTF-0-10	120
									LTF-0-10	277
Ordering Example: DLED-9800-VL-IP-V49-H49-FL-3K-90-7.8-LTF-0-10-120										