

Project:

2-Step Recessed LED Step Light SPECIFICATION SHEET

Unobtrusive yet effective step illumination source.

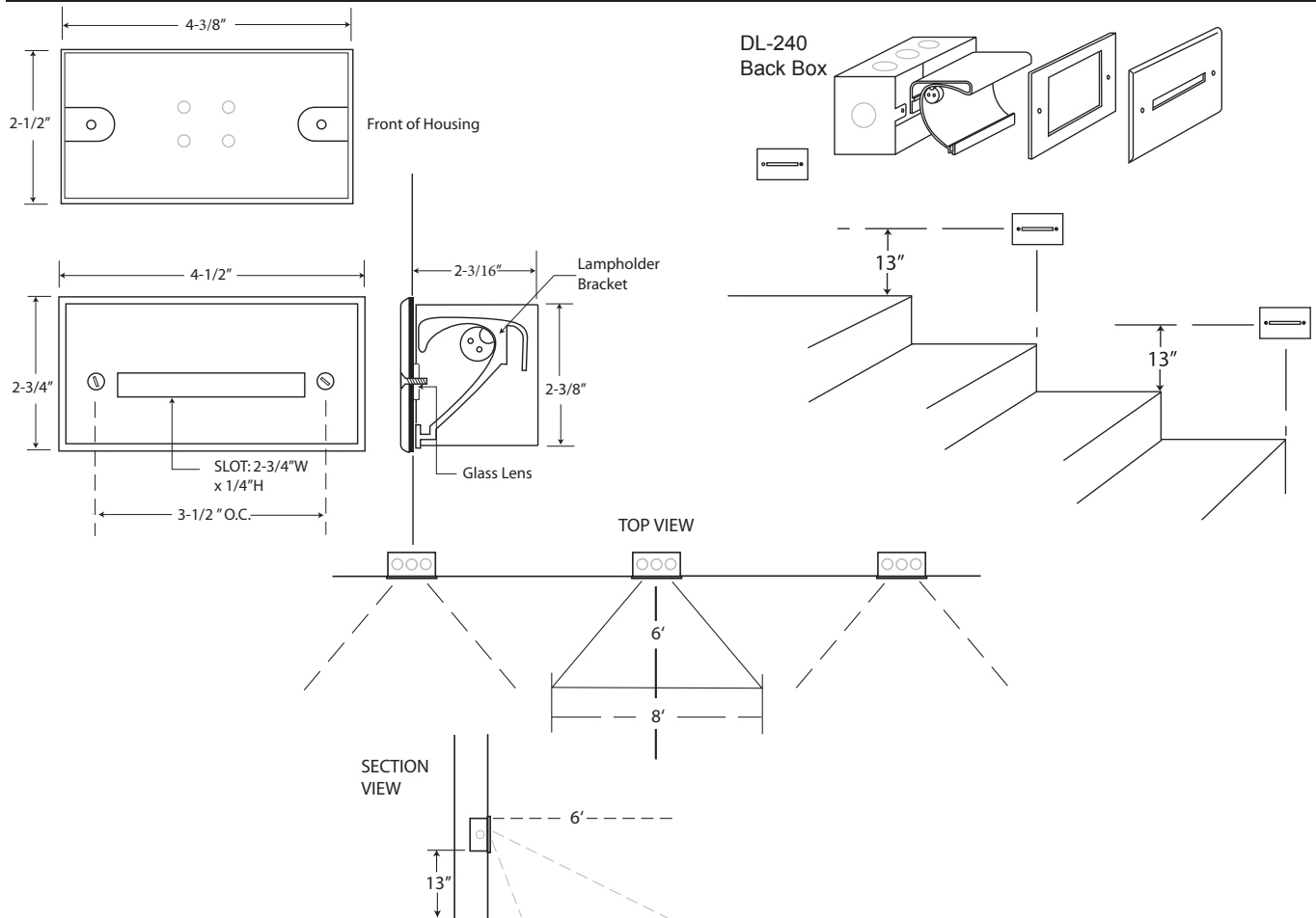
Date:

Lamping: 15W 12 Volt Xelogen or 20W 12 Volt Halogen

Cat. No. DL-124-X (15W Xelogen) Includes 240 Back Box

Cat. No. DL-124-H (20W Halogen) Includes 240 Back Box

Type:



Fixture Description:

Face plate solid brass. Reflector painted extruded aluminum. Brass housing.

Electrical:

Remote 12-volt power supply.

Mounting:

Recessed Mount. Mounts to DL-240 Back Box (supplied and shown in dimension drawing).

Lamp:

15W Halogen, 20 Xelogen, 12v.

Lenses:

Tempered diffusion glass mounted permanently to faceplate.

Finishes:

All Dreamscape finishes available. See guide at right.

Ordering Guide:

DL-124-H-Includes DL-240 Back Box

2-Step Recessed Step Light - 20W Halogen - Brass housing

DL-124-IX Includes DL-240 Back Box

2-Step Recessed Step Light - 15W Xelogen - Brass housing.

Finish Guide:

1. Verdè 2. Satin Nickel 3. Copper Bronze 4. White*
5 Ancient Bronze 6. Brass Bronze 8. Copper Plate
8. Copper Plate 9. Ancient Verdè 10. Grey Bronze
11. Rust Brown* 12. Black* 13. Pewter 14. Oil Rubbed
Bronze 15. Copper Edge Bronze* 16. Black Iron Textured
*Powder coat finish. All finishes are natural etched metal, except for 2, 8 and 13 which are plated.

Labels:

ETL listed for UL 1598

dreamscape
LIGHTING MFG., INC.

©2020 Dreamscape Lighting Mfg., Inc.
5521 W. Washington Blvd. • Los Angeles, CA 90016
Phone: 323-933-5760 • FAX: 323-933-3607
info@dreamscapelighting.com • www.dreamscapelighting.com
Specifications subject to change without notice



05_13_20_dl124spec