

### Recessed Damp Location Trimless Dimmable Linear Fixture with Screwless Decorative U-Shaped White Acrylic Diffuser and Integral Electronic Driver for Vertical L Intersecting Plane Applications - 90+CRI

PROJECT	TYPE	CATALOG NUMBER
---------	------	----------------

**Fixture Description:**

Recessed damp location trimless dimmable linear LED fixture with screwless decorative white acrylic diffuser.

**Features:**

- Diffuser:** High Transmission U-shaped white acrylic snap fit lens.
- Lamping:** 50,000 hour 3.9W x 2 (7.8W) LED light source.
- Electrical:** All drivers are constant voltage. 24V DC.
- Dimming:** Select from the following options.  
LUTRON L3DA-ECO Hi-Lume 1% Eco-System or 1% 3-Wire LUTRON LTEA2 Hi-Lume 1% 2-Wire Driver/Dimmer LTF 2-Wire Driver/Dimmer - **ELV** Reverse Phase w/Neutral LTF 0-10 Driver/Dimmer 120 or 277  
**NOTE: Every 4' of length will require 1 driver. Example: 96" length includes 2 drivers.**

- Adjustable L-Bracket:** Allows for 3/8" - 1" variable recessed depth alignment.  
**NOTE: For any other thickness contact factory for a custom bracket.**

- Housing:** Fixture wall is .0625 extruded aluminum.
- White powder coated wiring cover.**
- Fixture has one 1/2" knockout on each end.**

**Housing Dimensions:** 3.50"W x 3"D

**Length:** See Chart

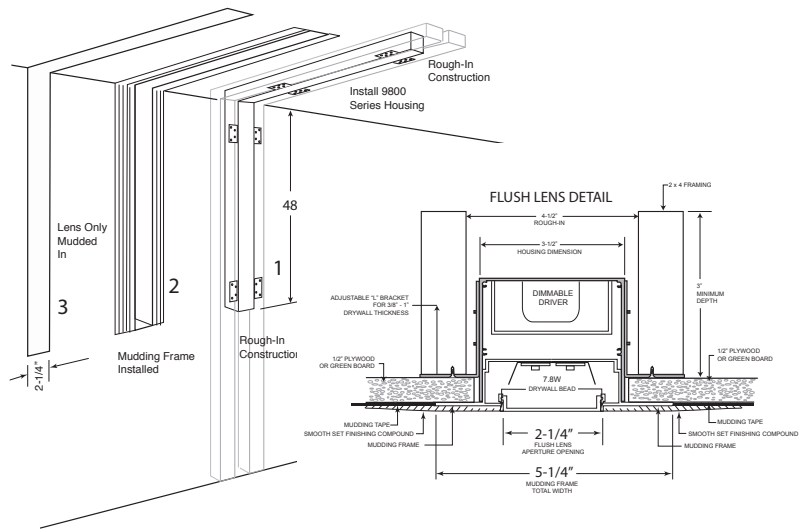
**Patent:** Design Patent No. 473,670S

US Patent No. US 6,616,309 B2

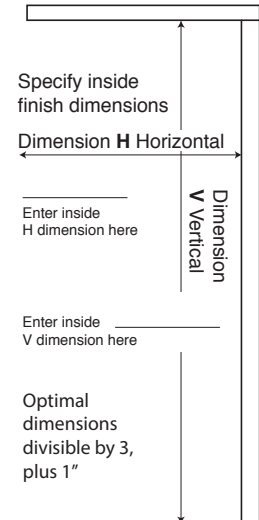
**NOTE: This fixture is NON-IC. If fixture is installed in an insulated space, insulation must be held back 3" from contact with fixture. Please check your local electrical and building codes.**

LED Wattage per Foot	Lumens per Foot	Color Temp.	GRI
7.8W	712	3K-90	97
7.8W	700	27K-90	90+
7.8W	712	35K-90	90+

Fixture Wattage per Foot	Lumens per Foot	Color Temp.	CRI
9.4W	390	3K-90	97
9.4W	382	27K-90	90+
9.4W	390	35K-90	90+



### Typical Vertical L Intersecting Plane Fixture Layout



**NOTE: PRIMARY SURGE PROTECTION SHOULD BE PROVIDED FOR MAXIMUM LIFE EXPECTANCY OF ELECTRONIC COMPONENTS**



To Form a Catalog Number:	Prefix	Series	Intersecting Plane	Vertical Length	Horizontal Length	Flush Lens	Color Temp.	Wattage	Driver	Voltage
	DLED	9800-VL	IP	V	H	FL	3K90	7.8	LTF	120
<b>Which Specifies:</b>	DLED	9800-VL	IP	V _____	H _____	FL	3K-90	7.8	L3DA-ECO LUTRON Hi-Lume™ 1% EcoSystem	120/277
				OPTIMAL DIMENSIONS: 25", 37", 49", 61" 73", 85", 97"	OPTIMAL DIMENSIONS: 25", 37", 49", 61" 73", 85", 97"		27K-90		LTEA2W LUTRON Hi-Lume™ 1% 2 Wire	120
				TO SPECIFY AN OPTIMAL DIMENSION, USE A NUMBER DIVISIBLE BY 3 AND ADD 1". NOTE: ANY DIMENSION MAY BE FABRICATED, BUT LIGHT UNIFORMITY MAY BE IMPACTED	TO SPECIFY AN OPTIMAL DIMENSION, USE A NUMBER DIVISIBLE BY 3 AND ADD 1". NOTE: ANY DIMENSION MAY BE FABRICATED, BUT LIGHT UNIFORMITY MAY BE IMPACTED		35K-90		LTF 2-Wire	120
<b>SEE DLED-9800-FL-3.9 SPEC SHEET FOR DRIVERS AND OTHER INFORMATION</b>									LTF-0-10	120
									LTF-0-10	277
Ordering Example: <b>DLED-9800-VL-IP-V49-H49-FL-3K-90-7.8-LTF-0-10-120</b>										