

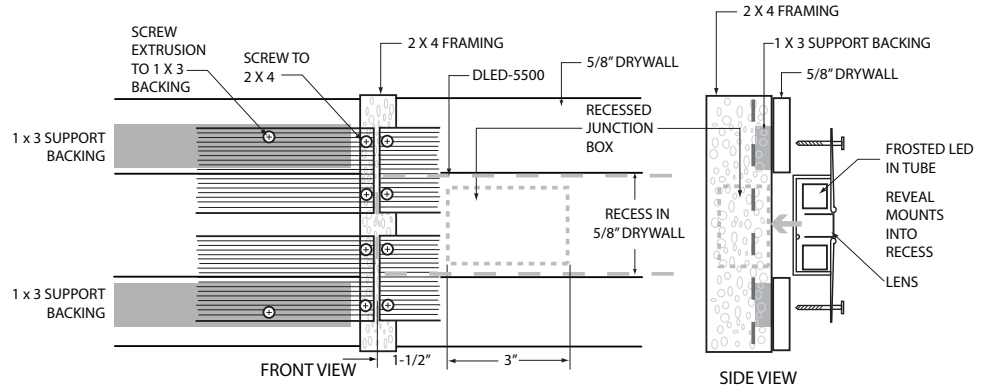
DLED-5900 Design Guide

Micro Slot Mounting Detail

Micro Slot mounting detail

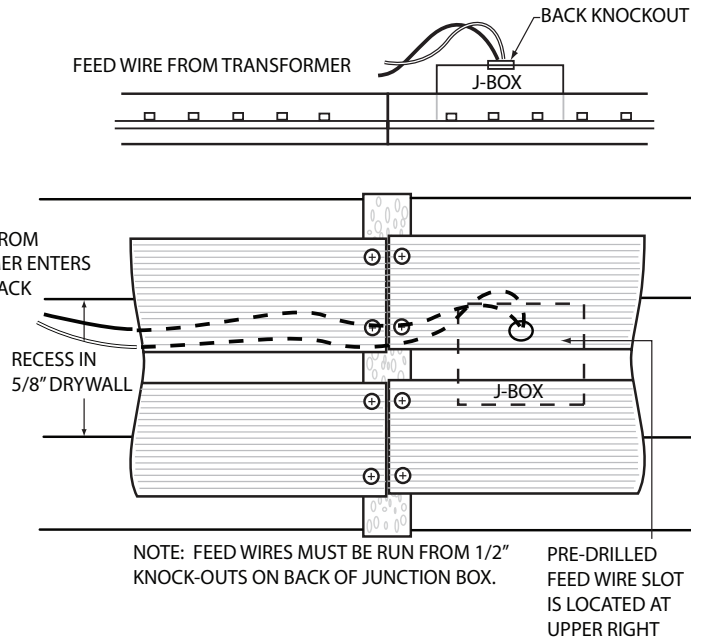
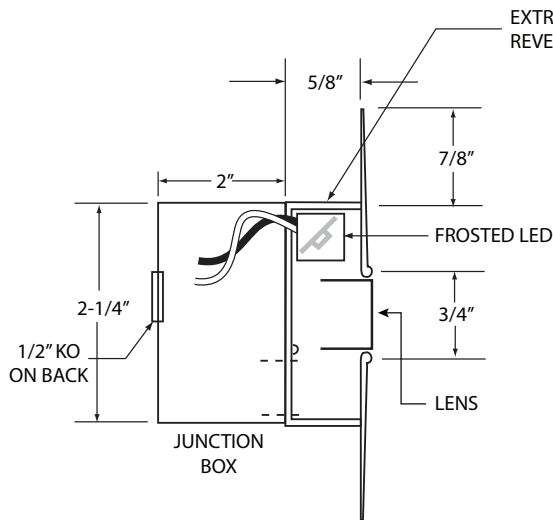
Provide framing so that the butt seams of the two extrusions center on a 2 x 4 for positive attachment of the ends.

Provide support backing behind drywall.



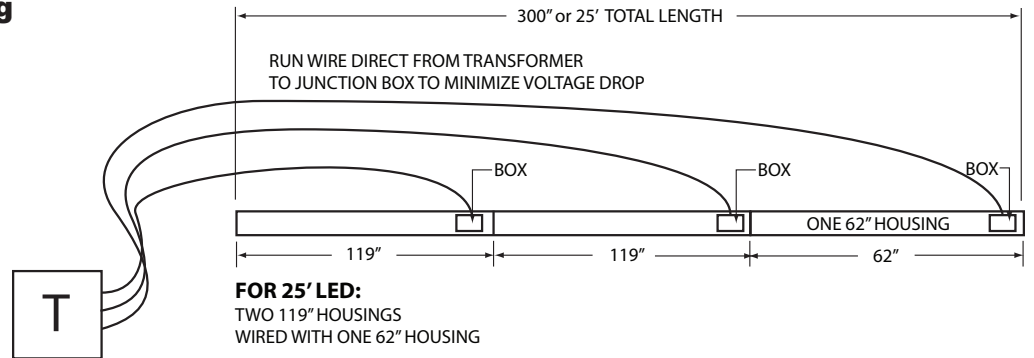
NOTE: JUNCTION BOX MOUNTED TO ALUMINUM EXTRUSION MUST RECESS INTO WALL. JUNCTION BOX IS 3"W AND 1-1/2" FROM EDGE OF 5900. BE SURE FRAMING WILL NOT INTERFERE WITH IT.

Micro Slot wiring detail



NOTE: FEED WIRES MUST BE RUN FROM 1/2" KNOCK-OUTS ON BACK OF JUNCTION BOX. PRE-DRILLED FEED WIRE SLOT IS LOCATED AT UPPER RIGHT

Micro Slot typical multi fixture run configurations with junction box positioning



FOR 25' LED:
TWO 119" HOUSINGS
WIRED WITH ONE 62" HOUSING

Ordering example for optimal length:

DLED-5900 - 70" - 2700K
Series Length Color Temp.

dreamscape
LIGHTING MFG., INC.

©2015 Dreamscape Lighting Mfg., Inc.
5521 W. Washington Blvd. • Los Angeles, CA 90016
Phone: 323-933-5760 • FAX: 323-933-3607
info@dreamscapelighting.com • www.dreamscapelighting.com
Specifications subject to change without notice

DLED5900DesignGuide_012015