

A Recessed Trimless Dimmable LED Linear Fixture for Damp Location with Screwless 98 CRI (3K) Decorative U-Shaped White Acrylic Diffuser and Integral Dimmable Driver

PROJECT	TYPE	CATALOG NUMBER
---------	------	----------------

Fixture Description:

Multi-lamp recessed trimless dimmable linear LED fixture with integral flush-with-drywall self-finishing housing and screwless decorative white acrylic diffuser Suitable for wall or ceiling mount applications.

Features:

- Diffuser:** High Transmission .
B - Semi-Gloss Standard
SB - Satin Finish
 U-shaped white acrylic. Diffuser attachment friction fit or clips.
- Lamping:** 35,000 hour 3.9W x 2 (7.8W per foot) LED light source.
- Dimming:** Select from the following options that feature LUTRON products.
 LUTRON **HDA-ECO** Hi-Lume™ 1% Eco-System or 1% 3-Wire
 LUTRON **LTE** Hi-Lume™ 1% 2-Wire Driver/Dimmer
LTF 2-Wire Driver/Dimmer
LTF 0-10 Driver/Dimmer
LTF-ELV Reverse Phase with Neutral.
- Adjustable L-Bracket:** Allows for 3/8" - 1" variable recessed depth alignment.
- Housing:** Fixture wall is .0625 extruded aluminum.
- White powder coated wiring cover.**
- Fixture has one 1/2" knockout on end where ballast is located.**

Housing Dimensions: 3.50"W x 3"D

Length: See Chart

Patent: Design Patent No. 473,670S

US Patent No. US 6,616,309 B2

Voltage: 120V or 277V.

L Brackets: Add suffix "M-1" or

"MOD" = modified bracket (consult factory)

Label: ETL for damp location.

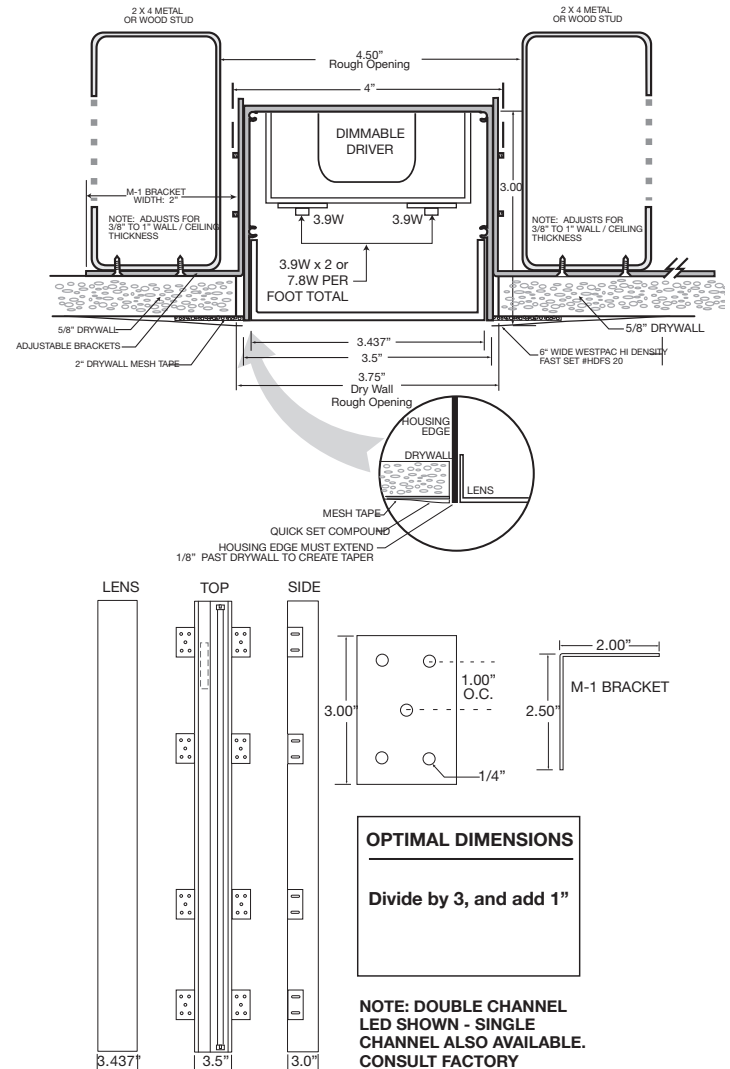


LED Wattage per Foot	Lumens per Foot	Color Temp.	CRI
7.8W	712	3K-90	97
7.8W	700	27K-90	90+
7.8W	712	35K-90	90+

Fixture Wattage per Foot	Lumens per Foot	Color Temp.	CRI
9.4W	390	3K-90	97
9.4W	382	27K-90	90+
9.4W	390	35K-90	90+

Prefix	Series	Length	Length*	Lens Type	Lens	Temperature	LED Watts	Mounting	Dimming	Voltage
DLED	9000		(Maximum Overall Length)	HTW-B	Mounting FL	3K-90	per Foot	WM	HDA	120
DLED	9000		" M.O.L.	High Transmission	Flush	3K-90	7.8	Wall Mount	HDA-ECO	120 or 277
			TO SPECIFY AN OPTIMAL DIMENSION, USE A NUMBER DIVISIBLE BY 3 AND ADD 1" .	Semi-Gloss	FL			Ceiling Mount	LUTRON Hi-Lume™ 1% EcoSystem	
				White		27K-90		Mount	HDA-ECO-3	120 or 277
				High Transmission		35K-90		CM	LUTRON Hi-Lume™ 1% 3-Wire	
				Satin White					LTE	120
				HTW-SB					LUTRON 1% 2-Wire	
									LTF	120
									2-Wire	
									LTF-0-10	120 or 277
									LTF-ELV	120 or 277

NOTE: ANY DIMENSION MAY BE FABRICATED, BUT LIGHT UNIFORMITY MAY BE IMPACTED



Ordering Example: **DLED-9000-49-HTW-B-FL-3K-90-7.8-WM-HDA-ECO-120**

NOTE: This fixture is NON-IC. If fixture is installed in an insulated space, installation must be held back 3" from contact with fixture. Please check your local electrical and building codes.



©2015 Dreamscape Lighting
 Specifications are subject to change without notice.

5521 West Washington Blvd.
 Los Angeles, CA 90016

Telephone: (323) 933-5760
 FAX: (323) 933-3607

www.dreamscapelighting.com
info@dreamscapelighting.com

Intertek
 DLED-9000-7.8_112015