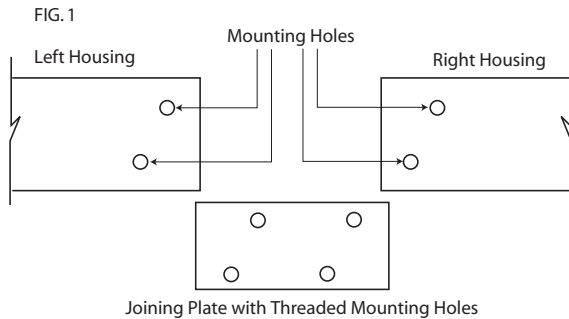


DLED-9000 Series Assembly Instructions for lengths over 12' long

Install rough framing which is both vertically and horizontally level where DLED-9000 is to be located. Create opening in framing one inch longer and one inch wider than housing. All framing dimensions should be accurate to 1/16" tolerance. The use of only very straight framing materials is recommended in order to make installation easier.

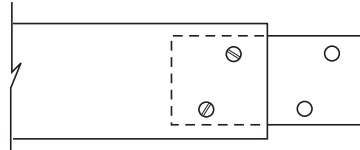
You have received a two or three -part housing that must be assembled on your job. To assemble this housing, remove sections from the cartons. Locate and remove joining plate from packing. This plate will be used to join the sections together (Fig. 1).



Screw through back of housing into the joining plate with supplied screws, attaching plate to the back side of the left housing area marked "left center". Leave screws a little loose. Attach hanger brackets of left side housing to framed area. Half of joining plate should be exposed past the left housing (Fig. 2). **IMPORTANT: While you are installing left and right housing into framing, place aluminum spacer inside housing to maintain shape of fixture.** Position right side housing into framed area lining up holes in right center housing with threaded holes in joiner plate. Attach hanger brackets to

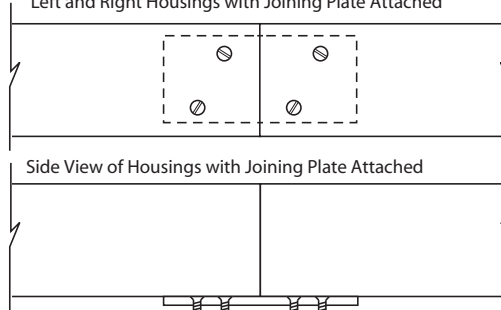
framing leaving fixture a little loose for adjustment purposes. Line up holes in housing with holes in joiner back plate. Screw housing to joining plate. Position left and right center side edges of

FIG. 2
Left Housing with Joining Plate attached



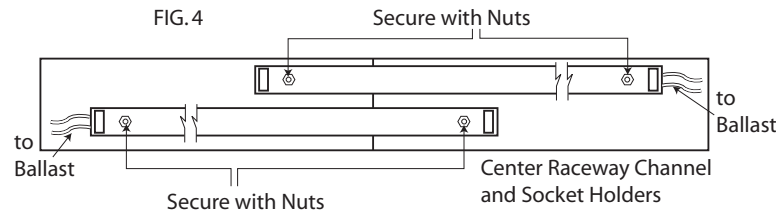
housing to form two straight edges with as small a seam as possible. Tighten all screws from housing to joining plate with supplied screws (Fig. 3). Install aluminum spacer into center of housing. Tighten all hanger brackets to framing. Remove aluminum spacer and

FIG. 3
Left and Right Housings with Joining Plate Attached



store for later installation. Install center lamp raceways by carefully unfolding pre-wired raceway channel and placing holes in raceway channel over exposed screws from housing. Secure with supplied nuts (Fig. 4).

FIG. 4



After center lamp raceways have been installed and wire leads are attached to ballast properly, start to level fixture so that bottom edge of housing is placed 1/8" past the finished drywall that will be installed later.

Follow standard mudding technique for DLED-9000 series fixtures after installed into framing.

