

Project:

2-Step Recessed LED Step Light SPECIFICATION SHEET

Unobtrusive yet effective step illumination source.

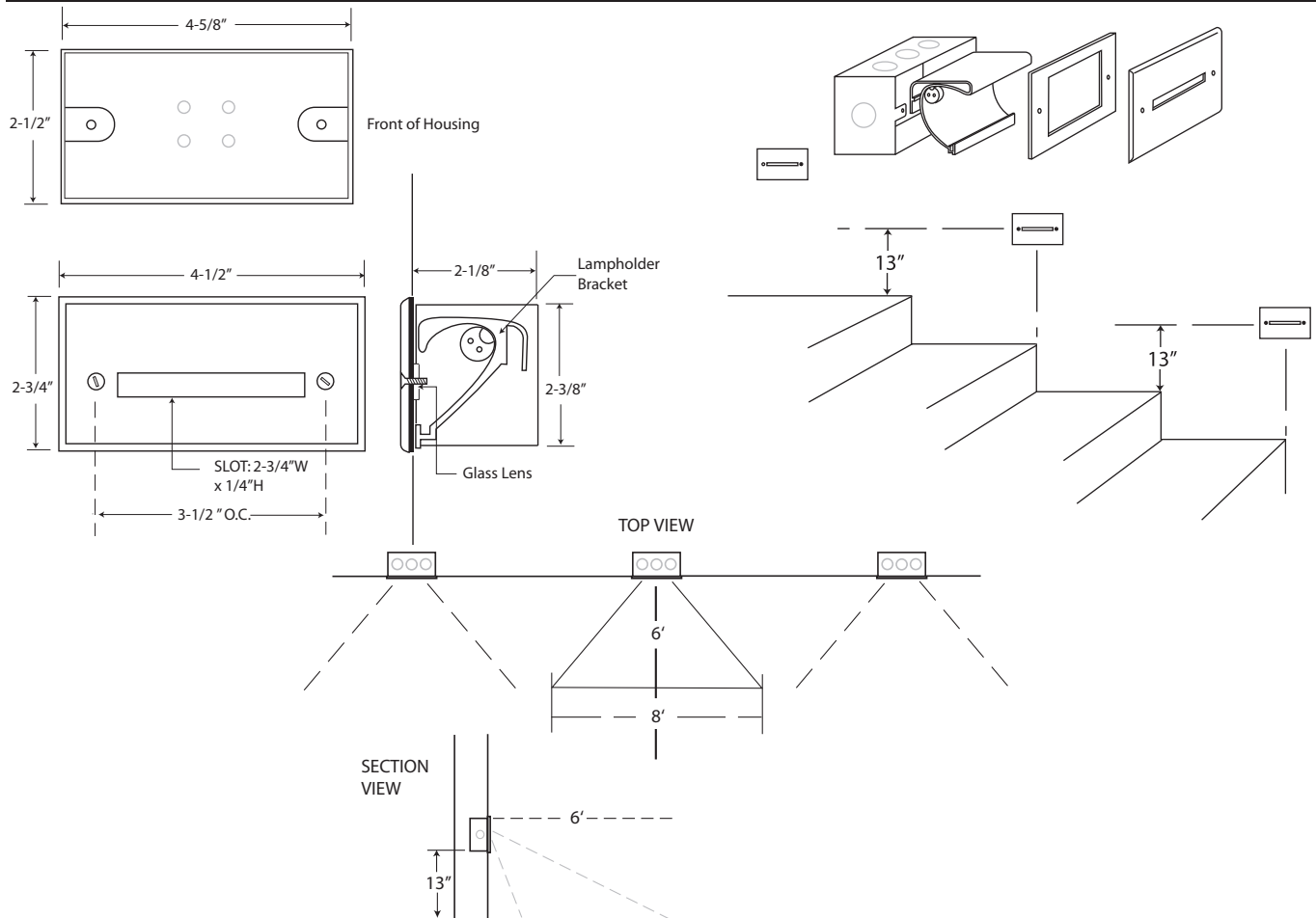
Lamping: 15W 12 Volt Xelogen or 20W 12 Volt Halogen

Cat. No. DL-124-X (15W Xelogen)

Cat. No. DL-124-H (20W Halogen)

Date:

Type:



Fixture Description:

Face plate solid brass. Reflector painted extruded aluminum. Brass housing.

Electrical:

Remote 12-volt power supply.

Mounting:

Recessed Mount. Mounts to single gang wall box (supplied and shown in dimension drawing).

Lamp:

15W, 12 volt, Xelogen.

Lenses:

Tempered diffusion glass mounted permanently to faceplate.

Finishes:

All Dreamscape finishes available. See guide at right.

Ordering Guide:

DL-124-H

2-Step Recessed Step Light - 20W Halogen - Brass housing

DL-124-X

2-Step Recessed Step Light - 15W Xelogen - Brass housing.

Finish Guide:

1 - Verdè 2 - Satin Nickel 3 - Copper Bronze
4 - White* 5 - Ancient Bronze 6 - Brass Bronze
8 - Copper Plate 9 - Ancient Verdè
10 - Grey Bronze 11 - Rust Brown* 12 - Black*
13 - Pewter

*Powder coat finish. All finishes are natural etched metal, except for 2, 8 and 13 which are plated.

Labels:

ETL listed for UL 1598

dreamscape
LIGHTING MFG., INC.

©2013 Dreamscape Lighting Mfg., Inc.
5521 W. Washington Blvd. • Los Angeles, CA 90016
Phone: 323-933-5760 • FAX: 323-933-3607
info@dreamscapelighting.com • www.dreamscapelighting.com
Specifications subject to change without notice



061113_dl124spec